

Norms: EN 60598-1, EN 60598-2-2



PRODUCT DESCRIPTION

Areas of Application: Police stations, detention centres, public spaces, psychiatric hospitals, schools.

Mounting: Ceiling recessed.

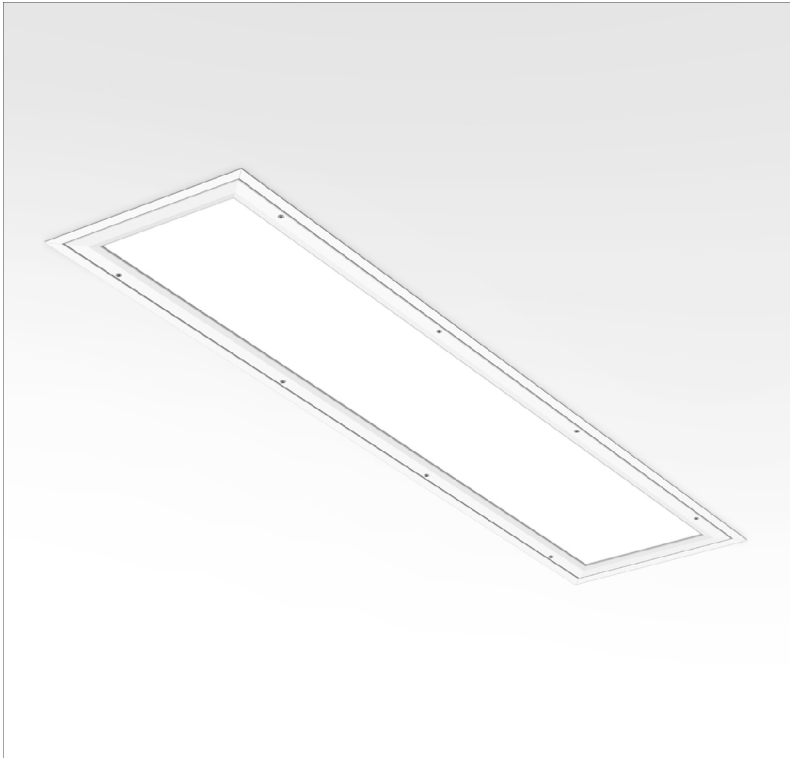
Light Distribution: Direct.

Optical System: Diffuser: 3mm polycarbonate.

Control Gear: Electronic equipment, 220-240VAC-50/60Hz.

Materials: Body: Steel sheet.
Frame: Extruded aluminium.

Surface Finish: Powder coated in white matt (RAL9016).



DOP - Opal polycarbonate diffuser

LAMP	W	AxBxC (mm)	⚡	HF	DSI	DALI
T5	2x28	1250x300x115	1226x276	965H.228.21.A4	965H.228.21.84	965H.228.21.74
	2x35	1550x300x115	1526x276	965H.235.21.A4	965H.235.21.84	965H.235.21.74
	2x49	1550x300x115	1526x276	965H.249.21.A4	965H.249.21.84	965H.249.21.74
	2x54	1250x300x115	1226x276	965H.254.21.A4	965H.254.21.84	965H.254.21.74
	2x80	1550x300x115	1526x276	965H.280.21.A4	965H.280.21.84	965H.280.21.74
	4x14	650x650x115	626x626	965H.414.21.A4	965H.414.21.84	965H.414.21.74
	4x24	650x650x115	626x626	965H.424.21.A4	965H.424.21.84	965H.424.21.74

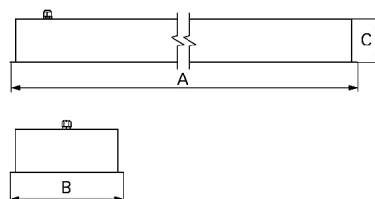
DPT - Transparent polycarbonate diffuser

LAMP	W	AxBxC (mm)	⚡	HF	DSI	DALI
T5	2x28	1250x300x115	1226x276	965H.228.7Z.A4	965H.228.7Z.84	965H.228.7Z.74
	2x35	1550x300x115	1526x276	965H.235.7Z.A4	965H.235.7Z.84	965H.235.7Z.74
	2x49	1550x300x115	1526x276	965H.249.7Z.A4	965H.249.7Z.84	965H.249.7Z.74
	2x54	1250x300x115	1226x276	965H.254.7Z.A4	965H.254.7Z.84	965H.254.7Z.74
	2x80	1550x300x115	1526x276	965H.280.7Z.A4	965H.280.7Z.84	965H.280.7Z.74
	4x14	650x650x115	626x626	965H.414.7Z.A4	965H.414.7Z.84	965H.414.7Z.74
	4x24	650x650x115	626x626	965H.424.7Z.A4	965H.424.7Z.84	965H.424.7Z.74

OPTIONS

Code	Description
K3	Emergency unit 3 hours.
K1	Emergency unit 1 hour.
955000	Steel safety cable.
--	Lamps as optional.

DIMENSIONS



* Lamp not included
Example code for order: 965H.228.21.74 (DALI) + 955000 (OPTIONS)

We reserve the right to make technical changes without prior notice.
Electrical/Optical data are subjected to a tolerance of +/-10%.

TO SPECIFY:

Recessed IP65 sealed luminaire for fluorescent T5(G5) 28/35/49/54/80W.
Aluminium frame with tamperproof screws and transparent or opal polycarbonate diffuser designed to resist extreme physical impact (IK10). Optional 1 or 3 hours emergency – as Indelague TLP /E.

We reserve the right to make technical changes without prior notice.
Electrical/Optical data are subjected to a tolerance of +/-10%.