

LED



Norms: EN 60598-1, EN 60598-2-2



IP 65

IK 10

850°C

230V/50Hz

PRODUCT DESCRIPTION

Areas of Application: Police stations, detention centres, public spaces, psychiatric hospitals, schools.

Mounting: Ceiling recessed.

Light Distribution: Direct.

Light Source: LED 4000K, CRI>80, 50.000h life.

Optical System: Diffuser: 3mm polycarbonate.

Control Gear: LED driver, 220-240VAC-50/60Hz.

Materials: Body: Steel sheet.
Frame: Extruded aluminium.

Surface Finish: Powder coated in white matt (RAL9016).

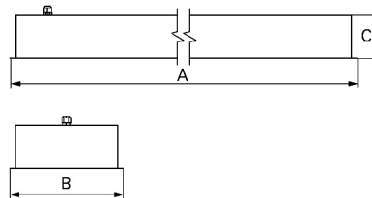
DOZ - Opal polycarbonate diffuser

LED	W	Lm	AxBxC (mm)	IK	HF	DSI	DALI
	2x22	6000	1250x300x115	1226x276	905H.222.2J.F4	905H.222.2J.J4	905H.222.2J.E4
	2x27	7500	1550x300x115	1526x276	905H.227.2J.F4	905H.227.2J.J4	905H.227.2J.E4
	4x10	5920	650x650x115	626x626	905H.410.2J.F4	905H.410.2J.J4	905H.410.2J.E4

OPTIONS

Code	Description
3000	Colour temperature 3000K.
K3	Emergency unit 3 hours.
K1	Emergency unit 1 hour.
955000	Steel safety cable.

DIMENSIONS



TO SPECIFY:

Recessed LED IP65 sealed luminaire with 6000/7500/5920 lumen light engine. Aluminium frame with tamperproof screws and opal polycarbonate diffuser designed to resist extreme physical impact (IK10). Optional 1 or 3 hours emergency – as Indelague TLP /E LED.

Example code for order: 905H.222.2J.E4 (DALI) + 3000 + 955000 (OPTIONS)

We reserve the right to make technical changes without prior notice. Electrical/Optical data are subjected to a tolerance of +/-10%.