

LED



Norms: EN 60598-1, EN 60598-2-2



### PRODUCT DESCRIPTION

**Areas of Application:** Police stations, detention centres, public spaces, psychiatric hospitals, schools.

**Mounting:** Ceiling recessed.

**Light Distribution:** Direct.

**Light Source:** LED 4000K, CRI>80, 50.000h life.

**Optical System:** Diffuser: 3mm polycarbonate.

**Control Gear:** LED driver, 220-240VAC-50/60Hz.

**Materials:** Body: Steel sheet.  
Frame: Extruded aluminium.

**Surface Finish:** Powder coated in white matt (RAL9016).

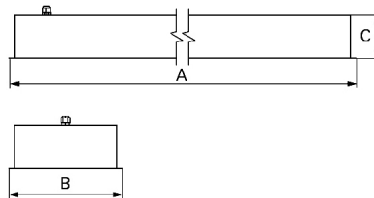
DOZ - Opal polycarbonate diffuser

LED	W	Lm	AxBxC (mm)	IP	HF	DSI	DALI
	2x22	6000	1250x300x115	1226x276	905H.222.2J.F4	905H.222.2J.J4	905H.222.2J.E4
	2x27	7500	1550x300x115	1526x276	905H.227.2J.F4	905H.227.2J.J4	905H.227.2J.E4
	4x10	5920	650x650x115	626x626	905H.410.2J.F4	905H.410.2J.J4	905H.410.2J.E4

### OPTIONS

Code	Description
3000	Colour temperature 3000K.
K3	Emergency unit 3 hours.
K1	Emergency unit 1 hour.
955000	Steel safety cable.

### DIMENSIONS



### TO SPECIFY:

Recessed LED IP65 sealed luminaire with 6000/7500/5920 lumen light engine. Aluminium frame with tamperproof screws and opal polycarbonate diffuser designed to resist extreme physical impact (IK10). Optional 1 or 3 hours emergency – as Roxo Lighting TLP /E LED.

Example code for order: 905H.222.2J.E4 (DALI) + 3000 + 955000 (OPTIONS)

We reserve the right to make technical changes without prior notice. Electrical/Optical data are subjected to a tolerance of +/-10%.