

Norms: EN 60598-1, EN 60598-2-1



PRODUCT DESCRIPTION

Areas of Application: Commercial and Business areas, Public buildings, Housing, Offices, Hotel and Restaurant services, Art and Culture spaces.

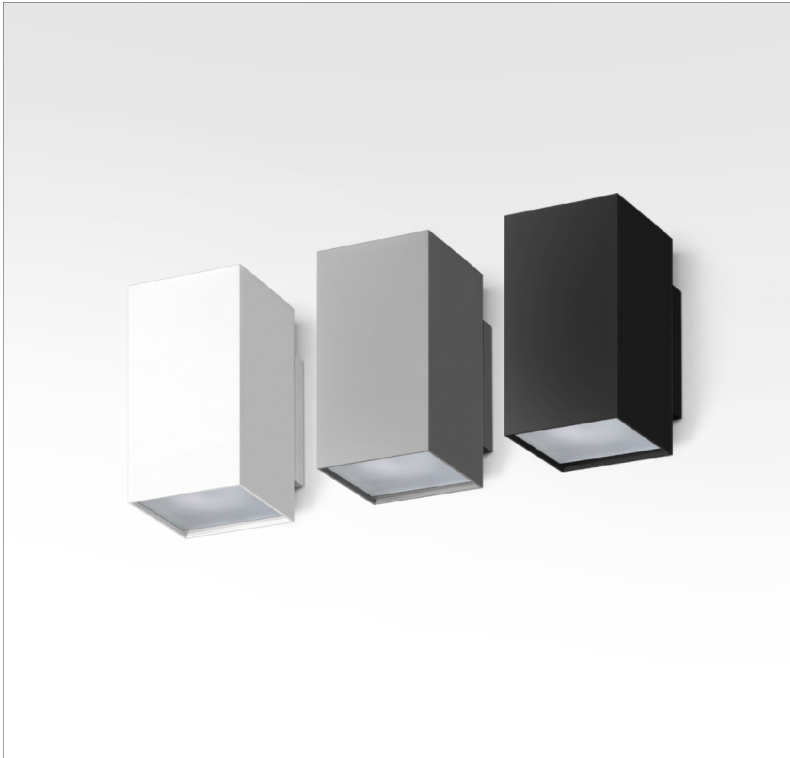
Mounting: Wall Mounted.

Light Distribution: Direct/Indirect.

Light Source: LED or Halogen (GU10) lamp.

Materials: Body: Extruded aluminium.

Surface Finish: Powder coated.



Direct/Indirect

	LAMP*		W	BEAM ↘	AxBxC (mm)	Kg	ORDER CODE
	LED	GU10	4/5,5	40/25	100x115x200	1,7	90044.K200.0
	HAL	GU10	max.50	20/25/40/50	100x115x200	1,7	90044.K200.0

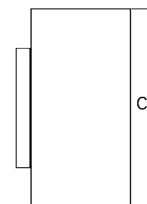
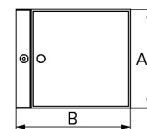
COLOUR / FINISH

Code	Description
W	White (RAL 9016)
B	Black (RAL 9005)
G	Grey (RAL 9006)
U	Blue (RAL 5002)
K	Red (RAL 3020)
V	Green (RAL 6018)
T	Yellow (RAL 1021)

OPTIONS

Code	Description
003	Transparent glass
002	Opal glass
--	Lamps as optional

DIMENSIONS

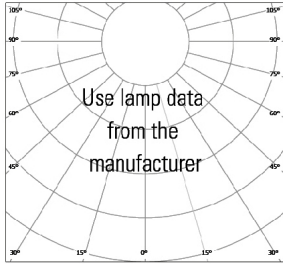


* Lamp not included.

Example code for order: 90044.K200.0 (ORDER CODE) + W (COLOUR/FINISH) + 002 (OPTIONS)

We reserve the right to make technical changes without prior notice. Electrical/Optical data are subjected to a tolerance of +/-10%.

PHOTOMETRY



TO SPECIFY:

Wall mounted direct/indirect double LED or halogen lamp square spotlight. Optional tempered glass and white, grey, black, red, yellow, green or blue finish available - as Roxo Lighting TREK /P.

We reserve the right to make technical changes without prior notice.
Electrical/Optical data are subjected to a tolerance of +/-10%.