

Norms: EN 60598-1, EN 60598-2-2



PRODUCT DESCRIPTION

Areas of Application: Commercial and Business areas, Public buildings, Offices, Schools, Corridors.

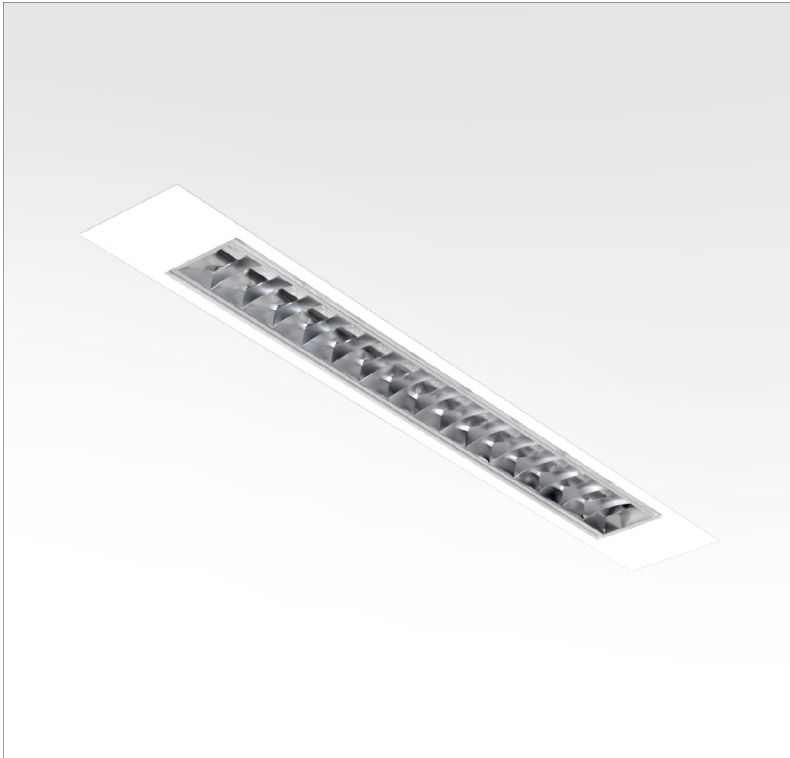
Mounting: Ceiling recessed.

Light Distribution: Direct.


Control Gear: Electronic equipment, 220-240VAC-50/60Hz.

Materials: Body: Steel sheet.


Surface Finish: Powder coated in white matt (RAL9016).



PS - P-SILVER Double parabolic louvre

	LAMP*	UGR	W	Lm/W	η(%)	AxBxC (mm)	Kg	HF	DSI	DALI
	T5	≤19	1x28	76	89	1200x300x58	4,9	9A2I.128.3T.A4	9A2I.128.3T.84	9A2I.128.3T.74
		≤19	1x54	67	86	1200x300x58	4,9	9A2I.154.3T.A4	9A2I.154.3T.84	9A2I.154.3T.74
		≤19	2x28	78	90	1200x300x58	4,8	9A2I.228.3T.A4	9A2I.228.3T.84	9A2I.228.3T.74
		≤19	2x54	71	90	1200x300x58	4,8	9A2I.254.3T.A4	9A2I.254.3T.84	9A2I.254.3T.74
	T5	≤19	4x14	68	87	600x600x58	5,5	9A2I.414.7V.A4	9A2I.414.7V.84	9A2I.414.7V.74
		≤19	4x24	70	98	600x600x58	5,5	9A2I.424.7V.A4	9A2I.424.7V.84	9A2I.424.7V.74
	T5	≤19	4x14	68	87	625x625x58	5,5	9A4O.414.7V.A4	9A4O.414.7V.84	9A4O.414.7V.74
		≤19	4x24	70	98	625x625x58	5,5	9A4O.424.7V.A4	9A4O.424.7V.84	9A4O.424.7V.74


PB - Polished double parabolic louvre

	LAMP*	UGR	W	Lm/W	η(%)	AxBxC (mm)	Kg	HF	DSI	DALI
	T5	≤19	1x28	67	78	1200x300x58	4,9	9A2I.128.81.A4	9A2I.128.81.84	9A2I.128.81.74
		≤19	1x54	60	77	1200x300x58	4,9	9A2I.154.81.A4	9A2I.154.81.84	9A2I.154.81.74
		≤16	2x28	68	79	1200x300x58	4,8	9A2I.228.81.A4	9A2I.228.81.84	9A2I.228.81.74
		≤19	2x54	62	79	1200x300x58	4,8	9A2I.254.81.A4	9A2I.254.81.84	9A2I.254.81.74
	T5	≤16	4x14	60	77	600x600x58	5,5	9A2I.414.5D.A4	9A2I.414.5D.84	9A2I.414.5D.74
		≤19	4x24	62	86	600x600x58	5,5	9A2I.424.5D.A4	9A2I.424.5D.84	9A2I.424.5D.74
	T5	≤16	4x14	60	77	625x625x58	5,5	9A4O.414.5D.A4	9A4O.414.5D.84	9A4O.414.5D.74
		≤19	4x24	62	86	625x625x58	5,5	9A4O.424.5D.A4	9A4O.424.5D.84	9A4O.424.5D.74

* Lamp not included.
Example code for order: 9A2I.424.7V.74 (DALI) + W5MD + KC (OPTIONS)

We reserve the right to make technical changes without prior notice.
Electrical/Optical data are subjected to a tolerance of +/-10%.

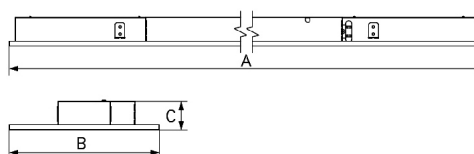
PM - Satin double parabolic louvre

LAMP*	UGR	W	Lm/W	η(%)	AxBxC (mm)	Kg	HF	DSI	DALI	
	T5	≤16	1x28	56	66	1200x300x58	4,9	9A2I.128.95.A4	9A2I.128.95.84	9A2I.128.95.74
		≤19	1x54	49	62	1200x300x58	4,9	9A2I.154.95.A4	9A2I.154.95.84	9A2I.154.95.74
	T5	≤16	2x28	57	66	1200x300x58	4,8	9A2I.228.95.A4	9A2I.228.95.84	9A2I.228.95.74
		≤19	2x54	52	66	1200x300x58	4,8	9A2I.254.95.A4	9A2I.254.95.84	9A2I.254.95.74
T5	≤16	4x14	52	67	600x600x58	5,5	9A2I.414.5Z.A4	9A2I.414.5Z.84	9A2I.414.5Z.74	
	≤19	4x24	54	75	600x600x58	5,5	9A2I.424.5Z.A4	9A2I.424.5Z.84	9A2I.424.5Z.74	
T5	≤16	4x14	52	67	625x625x58	5,5	9A4O.414.5Z.A4	9A4O.414.5Z.84	9A4O.414.5Z.74	
	≤19	4x24	54	75	625x625x58	5,5	9A4O.424.5Z.A4	9A4O.424.5Z.84	9A4O.424.5Z.74	

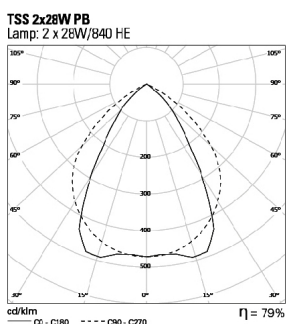
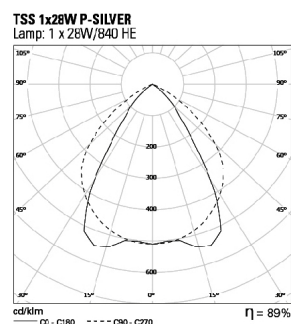
OPTIONS

Code	Description
W3M	Connector 3-pole wieland GST 18i3 male.
W5M	Connector 5-pole wieland GST 18i5 male.
W5MD	Connector 5-pole wieland GST 18i5 DIM male.
--	Light and presence sensor.
KC	Kit chantier.
AC	Air handling L/s.
955000	Steel safety cable.
BH3	B-H 300 type.
FL	Fineline (FL) type.
SLII	Shadowline II (SLII) type.
K3	Emergency unit 3 hours.
K1	Emergency unit 1 hour.
--	Bespoke projects.
--	Lamps as optional.

DIMENSIONS



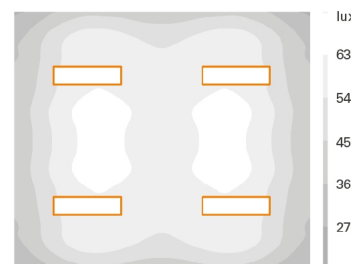
PHOTOMETRY



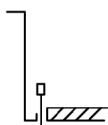
PERFORMANCE

TSS P-SILVER

LAMPS: 2 x 28W
SPACING: 5,4m x 4,7m
CEILING HEIGHT: 2,8m
MAINTENANCE: 0,8
REFLECTANCE: 20/70/50
WORKING PLANE: 0,8m
ILLUMINANCE: 534 lux



FIXING SYSTEMS



Lay-in version
for exposed T
grids
15/24mm.

TO SPECIFY:

Recessed raft available for different ceiling systems in 1200x300, 600x600 or 625x625mm with integrated luminaire. Luminaire with double parabolic P-Silver/polished/satin high output aluminium louvre. Optional light/presence sensor, air handling, dimmable versions and 1 or 3 hours emergency available – as Indelague TSS.

We reserve the right to make technical changes without prior notice.
Electrical/Optical data are subjected to a tolerance of +/-10%.