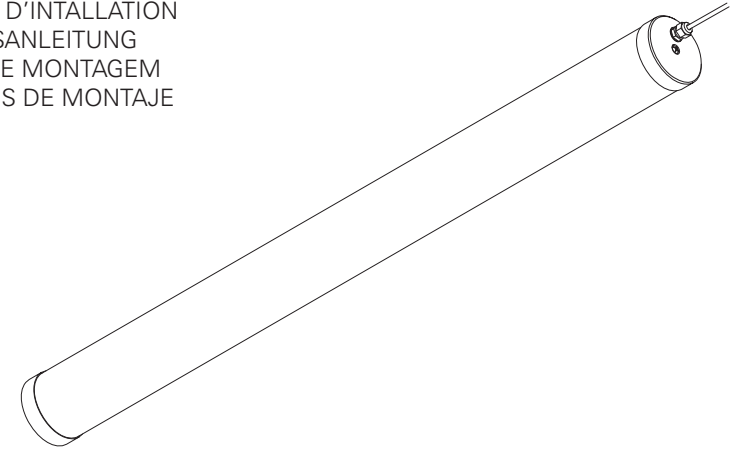


## TTM LED

**EN** INSTALLATION INSTRUCTIONS  
**FR** INSTRUCTIONS D'INTALLATION  
**DE** INSTALLATIONSANLEITUNG  
**PT** INSTRUÇÕES DE MONTAGEM  
**ES** INSTRUCCIONES DE MONTAJE



### TTM LED

CE



UTILIZAR LA LUMINARIA EN ZONAS QUE CONTENGAN AGENTES QUÍMICOS: ÁCIDOS, DISOLVENTES, PINTURAS, BARNICES, ETC.”

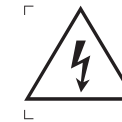
**EN** WARNING: THE LIGHT SOURCE CONTAINED IN THE LUMINAIRE SHOULD BE REPLACED ONLY BY THE MANUFACTURER. DO NOT USE THIS EQUIPMENT IN AREAS CONTAINING CHEMICAL AGENTS: ACIDS, SOLVENTS, PAINTS, COATINGS, ETC.

**FR** AVERTISSEMENT: LA SOURCE DE LUMIÈRE CONTENUE DANS LA LUMINAIRE DOIT ÊTRE REMPLACÉE PAR LE FABRICANT. EN CAS D'ANOMALIE DÉTECTÉE, CONTACTEZ LE FABRICANT. NE PAS UTILISER L'ÉQUIPEMENT DANS LES ZONES QUI CONTIENNENT DES AGENTS CHIMIQUES: ACIDES, SOLVANTS, PEINTURES, VERNIS, ETC.

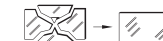
**DE** WARNUNG: DIE IN DER LEUCHTE ENTHALTEN LICHTQUELLE SOLLTE NUR VOM HERSTELLER ERSETZT WERDEN. VERWENDEN SIE DIESES GERÄT NICHT IN BEREICHEN MIT CHEMISCHEN MITTELN: SÄUREN, LÖSUNGSMITTEL, FARBEN, BESCHICHTUNGEN ETC.

**PT** ATENÇÃO: A FONTE DE LUZ CONTIDA NA LUMINÁRIA DEVE SER SUBSTITUÍDA UNICAMENTE PELO FABRICANTE. QUALQUER ANOMALIA DETECTADA CONTACTAR O FABRICANTE. NÃO UTILIZAR O EQUIPAMENTO EM ZONAS QUE CONTENHAM AGENTES QUÍMICOS: ÁCIDOS, SOLVENTES, TINTAS, VERNIZES, ETC.

**ES** ATENCIÓN: LA FUENTE DE LUZ CONTENIDA EN LA LUMINARIA DEBE SER SUSTITUIDA ÚNICAMENTE POR EL FABRICANTE. CUALQUIER ANOMALÍA DETECTADA CONTACTAR CON EL FABRICANTE. NO



**EN** CAUTION, RISK OF ELECTRIC SHOCK.  
**FR** ATTENTION, RISQUE DE CHOC ÉLECTRIQUE.  
**DE** ACHTUNG, GEFAHR EINES STROMSCHLAGS.  
**PT** CUIDADO, RISCO DE CHOQUE ELÉTRICO.  
**ES** PRECAUCIÓN, RIESGO DE DESCARGA ELÉCTRICA.



**EN** IF GLASS OR DIFFUSER BREAK OR CRACK, PLEASE REPLACE IT.  
**FR** EN CAS DE CASSE OU FISSUREMENT, REMPLACEZ LE VERRE OU DIFFUSEUR.  
**DE** BEI BRUCH ODER RISS, GLAS ODER DIFFUSER ERSETZEN.  
**PT** EM CASO DE QUEBRA OU FISSURA, SUBSTITUIR O VIDRO OU DIFUSOR.  
**ES** EN CASO DE ROTURA O FISURA, SUSTITUIR EL VIDRIO O DIFUSOR.



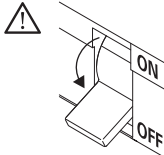
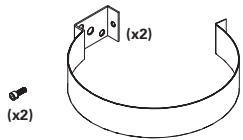
**EN** Read carefully the general terms and conditions of use and environmental concern with recycling attached. | **FR** Lire attentivement les conditions générales d'utilisations et de préoccupation environnementales avec les recyclage ci-joint. | **DE** Bitte lesen Sie de Allgemeinen Geschäftsbedingungen und Umweltbewusstsein über Recycling angeschlossen. | **PT** Ler atentamente as condições gerais de uso e preocupação ambiental com a reciclagem, em anexo. | **ES** Lea atentamente las condiciones generales de uso y preocupación ambiental con el reciclaje adjuntos.

**EN** We reserve the right to make changes on technical specifications, design and installation leaflet without prior notice. | **FR** Sous réserve de modifications au niveau de la conception, des spécifications techniques et de la notice. | **DE** Änderungen von Entwurf, technischen Daten und Bedienungsanleitungen bleiben vorbehalten. | **PT** O fabricante reserva-se no direito de realizar modificações no desenho, especificações técnicas e folheto, sem aviso prévio. | **ES** El fabricante se reserva el derecho de realizar modificaciones en el diseño, las especificaciones técnicas y el folleto.

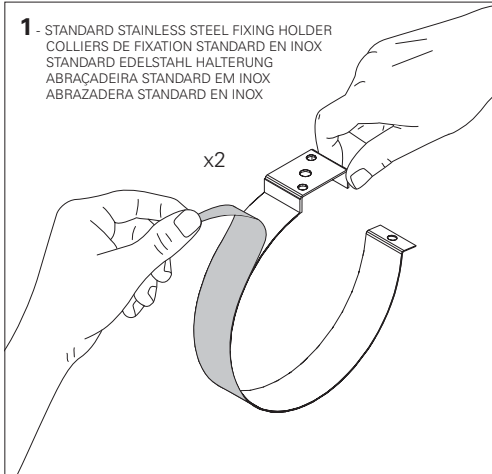
TTM LED



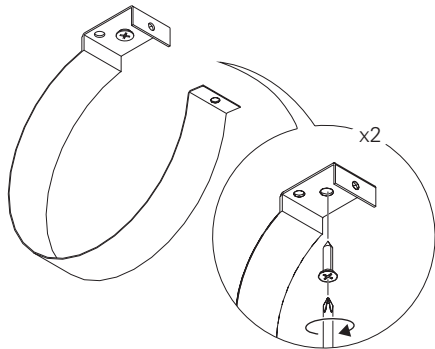
EN Accessories  
FR Accessoires  
DE Zubehör  
PT Acessórios  
ES Accesorios



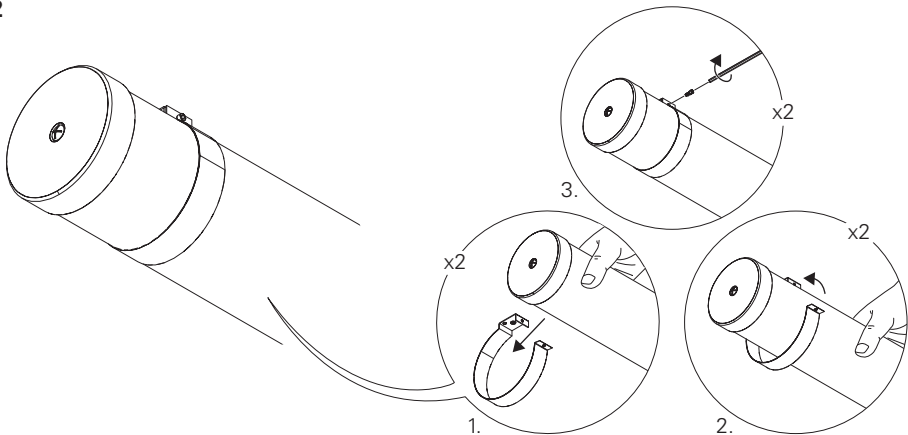
**1** STANDARD STAINLESS STEEL FIXING HOLDER  
COLLIERS DE FIXATION STANDARD EN INOX  
STANDARD EDELSTAHL HALTERUNG  
ABRACADEIRA STANDARD EM INOX  
ABRAZADERA STANDARD EN INOX

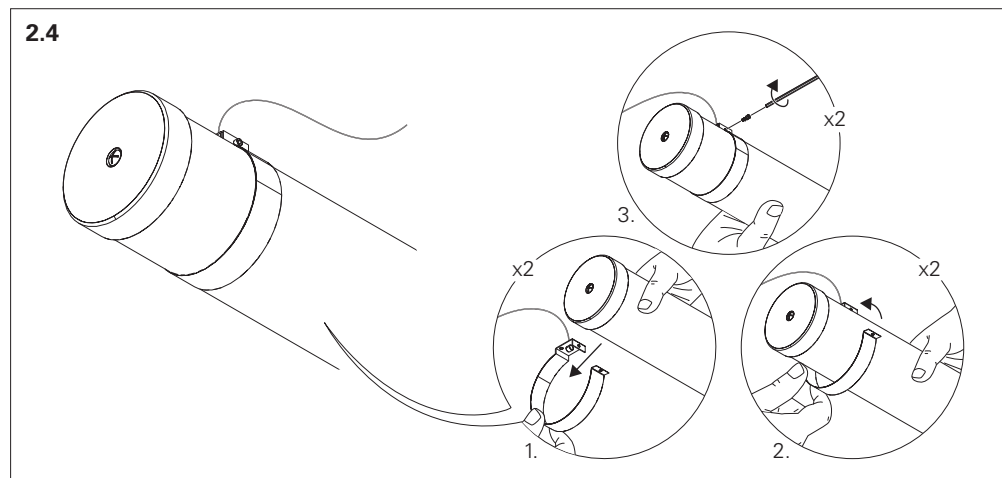
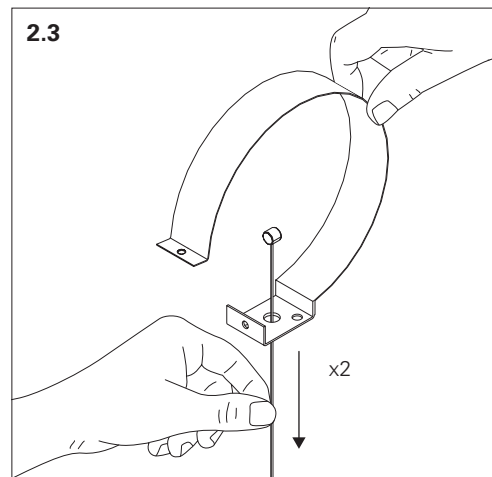
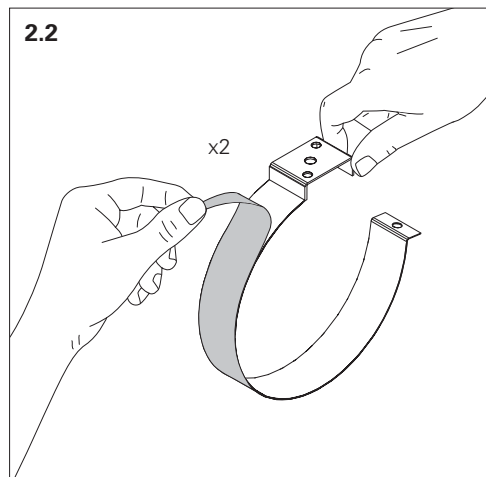
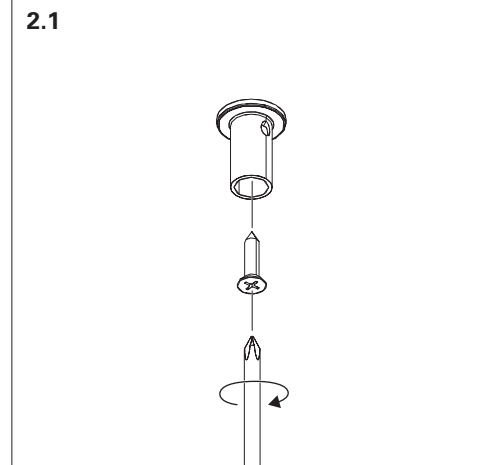
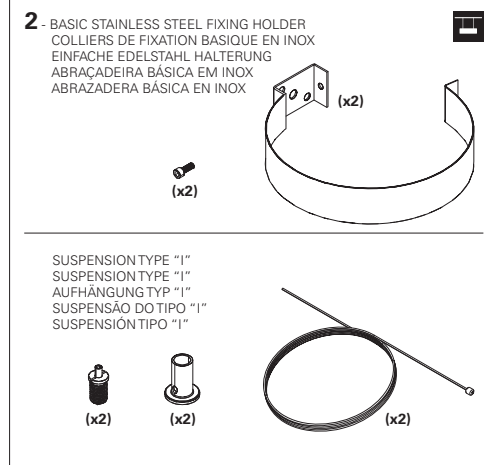


**1.1**

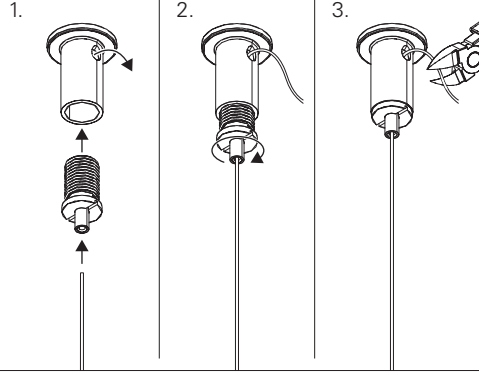


**1.2**

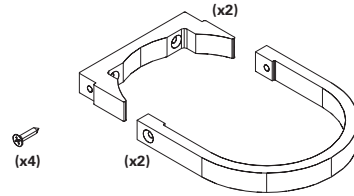




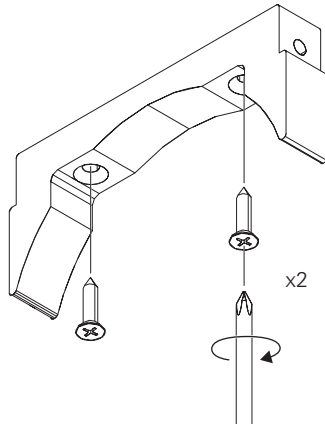
2.5



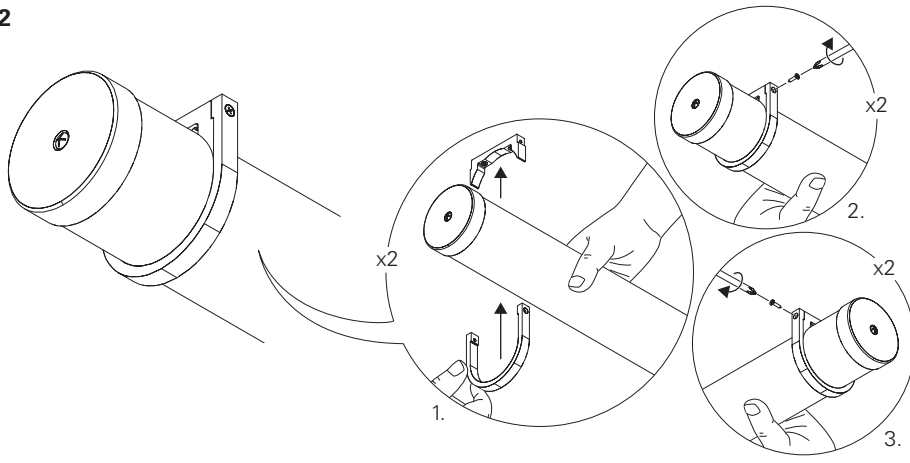
**3** - ACRYLIC FIXING HOLDER  
COLLIER DE FIXATION EN ACRYLIQUE  
ACRYL HALTERUNG  
ABRACADEIRA EM ACRÍLICO  
ABRAZADERA ACRÍLICA



3.1



3.2

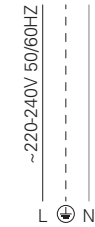


## TTM LED

**EN** POWER SUPPLY  
**FR** CÂBLAGES  
**DE** VERDRÄHTUNGSTYPEN  
**PT** ALIMENTAÇÃO ELÉCTRICA  
**ES** ALIMENTACIÓN ELÉCTRICA

### HF

STANDARD POWER SUPPLY  
CÂBLAGE STRANDARD  
STANDARD VERDRÄHTUNG  
ALIMENTAÇÃO ELÉCTRICA STANDARD  
ELECTRIFICACIÓN ESTÁNDAR



BLUE - N (NEUTRAL)  
GREEN AND YELLOW - (EARTH)  
BROWN - L (LIVE)

BLEU - N (NEUTRE)  
VERT ET JAUNE - (TERRE)  
MARRON - L (PHASE)

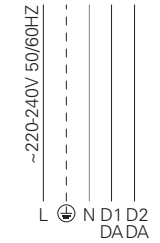
BLAU - N (NEUTRAL)  
GRÜN UND GELB - (ERDE)  
BRAUN - L (PHASE)

AZUL - N (NEUTRO)  
VERDE E AMARELO - (TERRA)  
CASTANHO - L (FASE)

AZUL - N (NEUTRAL)  
VERDE Y AMARILLO - (TIERRA)  
MARRÓN - L (FASE)

### DALI

DIMMABLE POWER SUPPLY  
CÂBLAGE AVEC GRADATION  
DIMMBARE VERDRÄHTUNG  
ALIMENTAÇÃO ELÉCTRICA COM REGULAÇÃO  
ELECTRIFICACIÓN CON REGULACIÓN



BLUE - N (NEUTRAL)  
GREEN AND YELLOW - (EARTH)  
BROWN - L (LIVE)  
GREY - D1+  
BLACK - D2-

BLEU - N (NEUTRE)  
VERT ET JAUNE - (TERRE)  
MARRON - L (PHASE)  
GRIS - D1+  
NOIR - D2-

BLAU - N (NEUTRAL)  
GRÜN UND GELB - (ERDE)  
BRAUN - L (PHASE)  
GRAU - D1+  
SCHWARZ - D2-

AZUL - N (NEUTRO)  
VERDE E AMARELO - (TERRA)  
CASTANHO - L (FASE)  
CINZA - D1+  
PRETO - D2-

AZUL - N (NEUTRAL)  
VERDE Y AMARILLO - (TIERRA)  
MARRÓN - L (FASE)  
GRIS - D1+  
NEGRO - D2-