

MADE IN
PORTUGAL
by INDELAGUE GROUP

EN



TT range

INDELAGUE GROUP

INDELAGUE™ | ROXO lighting
HIGH TECH | LIGHTING SOLUTIONS

TT range

Tired of traditional waterproof luminaires and looking for something different? TTP and TTM fittings are the perfect solution. Elegancy, simplicity, flexibility are some of the main characteristics of these products, where the possibilities of individual luminaire or continuous line, can always be a choice.

Its applications include Food Plants, Supermarkets, Amusement Parks, Car Washes, Parking Garages, Retail areas, Tunnels,

Greenhouses, Water Treatment Plants, Bridges, Shopping Malls, Train stations, Walkways and even each time more frequently in Decorative Lighting solutions.

Also available in LED, when choosing this version of the product, you are adopting a sustainable solution, by reducing energy consumption and your carbon footprint, as well as using a robust and reliable product. The reduction of the monthly energy costs,

which comes with the LED choice, is also a strong argument when opting for these products.

Areas of Application: Locker rooms, industrial areas, gas stations, restaurants and hotels, parking places, garages.



TTP LED IP44

Waterproof luminaire

- T8 LED lamp version.
- Injected polycarbonate end cap without screws.
- Opal polycarbonate diffuser.
- LED luminaire luminous flux up to 800/1600/2000 Lm.
- 10W/20W/25W available.
- LED up to 77 Lm/W.
- Life 30000 Hours.
- Colour temperature 4000k.
- CRI >80.
- Transparent cable included.

Optional:

- Anodized aluminium union for continuous line.
- Acrylic or inox fixing holder.
- Suspension type "I".



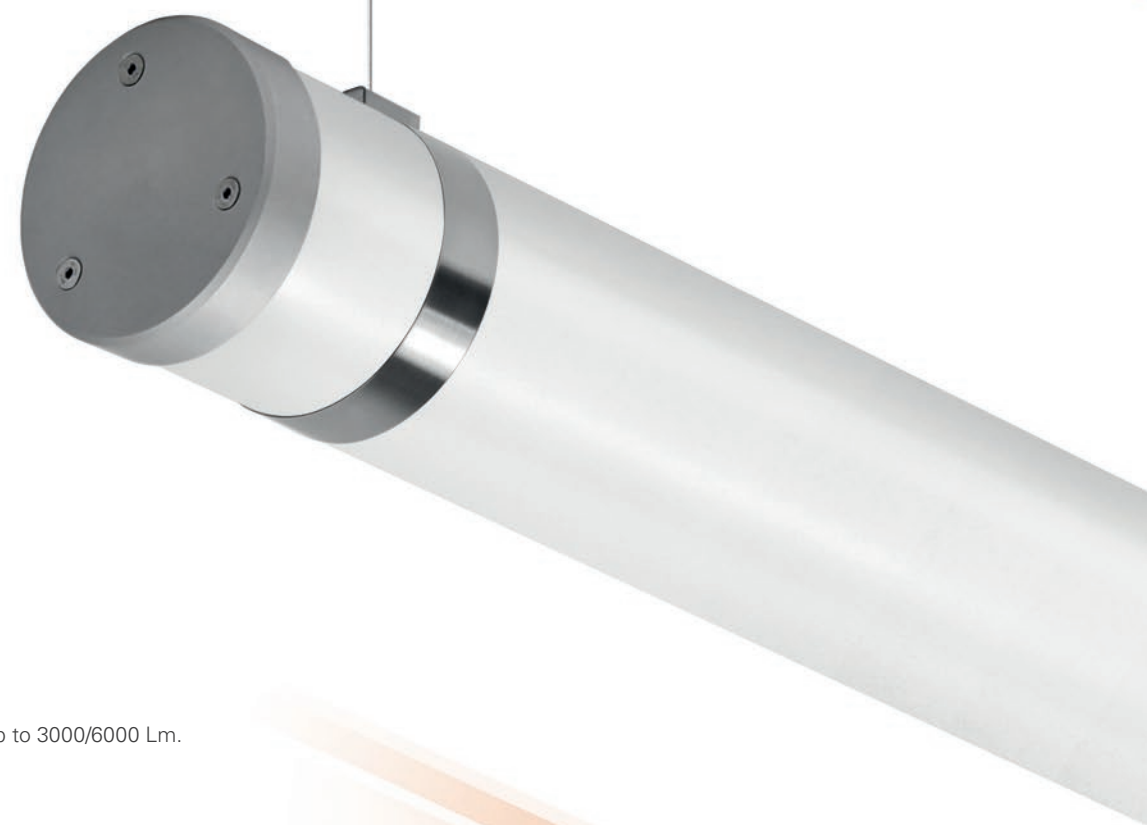
TTP LED IP68

Waterproof luminaire

- T8 LED lamp version.
- LED luminaire luminous flux up to 800/1600/2000 Lm.
- 10W/20W/25W available.
- LED up to 77 Lm/W.
- Life 30000 Hours.
- Colour temperature 4000k.
- CRI >80.
- Black cable included.

Optional:

- Polycarbonate or anodized aluminium end caps.
- Transparent or opal polycarbonate diffuser.
- Anodized aluminium union for continuous line.
- Plastic or inox fixing holder.
- Suspension type "I" or type "I" Inox.



TTM LED IP65

Waterproof luminaire

- Led board version.
- Stainless steel end caps.
- Opal polycarbonate diffuser.
- LED luminaire luminous flux up to 3000/6000 Lm.
- 26W/52W available.
- LED up to 101 Lm/W.
- Life 50000 Hours.
- Colour temperature 4000/3000k.
- CRI >80.
- Black cable included.

Optional:

- Basic/wall/ceiling fixing holder.
- Suspension type "I".
- Dimmable control gear (DSI/DALI).
- 1 or 3 hours emergency.



TTM LED IP67

Waterproof luminaire

- Led board version.
- Anodized aluminium end caps.
- Opal polycarbonate diffuser.
- LED luminaire luminous flux up to 3000/6000 Lm.
- 26W/52W available.
- LED up to 101 Lm/W.
- Life 50000 Hours.
- Colour temperature 4000/3000k.
- CRI >80.
- Black cable included.

Optional:

- Basic/wall/ceiling fixing holder.
- Suspension type "I".
- Dimmable control gear (DSI/DALI).
- 1 or 3 hours emergency.



TTP IP44

Waterproof luminaire

- T5 lamp version.
- Injected polycarbonate end cap without screws.
- Opal polycarbonate diffuser.
- Different powers available.
- Up to 94% LOR.
- Up to 80 Lm/W.
- Transparent cable included.

Optional:

- Anodized aluminium union for continuous line.
- Acrylic or inox fixing holder.
- Suspension type "I".
- Dimmable control gear (DSI/DALI).



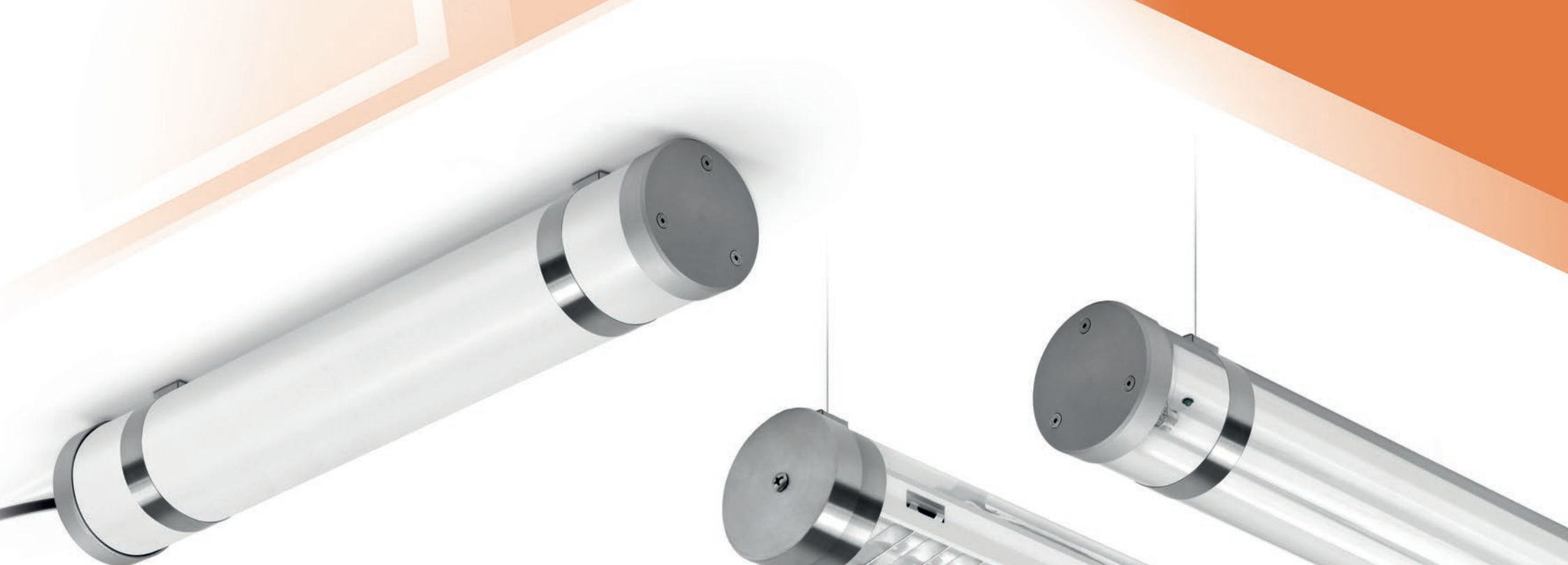
TTP IP68

Waterproof luminaire

- T5 lamp version.
- Different powers available.
- Up to 94% LOR.
- Up to 80 Lm/W.
- Black cable included.

Optional:

- Polycarbonate or anodized aluminium end caps.
- Transparent or opal polycarbonate diffuser.
- Anodized aluminium union for continuous line.
- Plastic or inox fixing holder.
- Suspension type "I" or type "I" Inox.
- Dimmable control gear (DSI/DALI).



TTM IP65

Waterproof luminaire

- T5 lamp version.
- Stainless steel end caps.
- Different powers available.
- Up to 85% LOR.
- Up to 73 Lm/W.
- Black cable included.

Optional:

- Transparent or opal polycarbonate diffuser.
- Version with polish double parabolic louvre and transparent polycarbonate diffuser.
- Basic/wall/ceiling fixing holder.
- Suspension type "I".
- Dimmable control gear (DSI/DALI).
- 1 or 3 hours emergency.



TTM IP67

Waterproof luminaire

- T5 lamp version.
- Anodized aluminium end caps.
- Different powers available.
- Up to 85% LOR.
- Up to 73 Lm/W.
- Black cable included.

Optional:

- Transparent or opal polycarbonate diffuser.
- Version with polish double parabolic louvre and transparent polycarbonate diffuser.
- Basic/wall/ceiling fixing holder.
- Suspension type "I".
- Dimmable control gear (DSI/DALI).
- 1 or 3 hours emergency.

SPECIFICATION

TTP LED

W	Lm	LOR	Lm/W	AxB(mm) IP44	AxB(mm) IP68
1x10	800	96%	77	Ø50x671	Ø53x710
1x20	1600	96%	77	Ø50x1280	Ø53x1320
1x25	2000	96%	77	Ø50x1582	Ø53x1620

Colour rendering index CRI >80

30.000h lifetime

TTP (T5)

W	Lm	LOR	Lm/W	AxB(mm) IP44	AxB(mm) IP68
1x14	1250	93%	70	Ø50x610	Ø53x650
1x21	1900	95%	81	Ø50x910	Ø53x950
1x24	1750	92%	65	Ø50x610	Ø53x650
1x28	2600	94%	80	Ø50x1210	Ø53x1250
1x35	3300	92%	80	Ø50x1510	Ø53x1550
1x39	3100	95%	73	Ø50x910	Ø53x950
1x49	4300	90%	74	Ø50x1510	Ø53x1550
1x54	4450	90%	70	Ø50x1210	Ø53x1250
1x80*	6150	91%	65	Ø50x1510	Ø53x1550

* Use only under 15°C.

TTM LED

W	Lm	LOR	Lm/W	AxB(mm) IP65	AxB(mm) IP67
2x13	3000	88%	99	Ø103x680	Ø108x700
2x26	6000	90%	101	Ø103x1250	Ø108x1270

Colour rendering index CRI >80

Colour consistency 3-step MacAdams (SDCM)

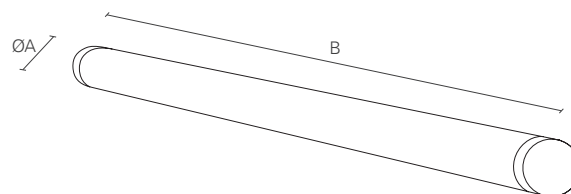
50.000 h lifetime (L80)

TTM (T5)

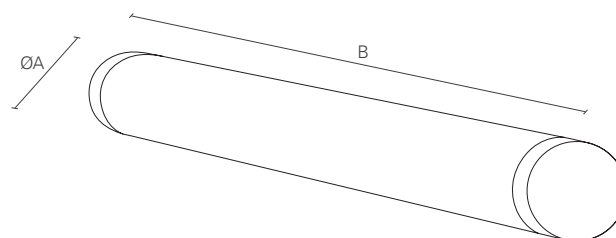
W	Lm	LOR	Lm/W	AxB(mm) IP65	AxB(mm) IP67
2x14	2500	85%	66	Ø103x650	Ø108x670
2x21	3800	85%	70	Ø103x950	Ø108x970
2x24	3500	84%	61	Ø103x650	Ø108x670
2x28	5200	81%	70	Ø103x1250	Ø108x1270
2x35	6600	84%	73	Ø103x1550	Ø108x1570
2x39	6200	84%	63	Ø103x950	Ø108x970
2x49	8600	85%	69	Ø103x1550	Ø108x1570
2x54	8900	79%	62	Ø103x1250	Ø108x1270

DIMENSIONS AVAILABLE:

TTP LED & TTP

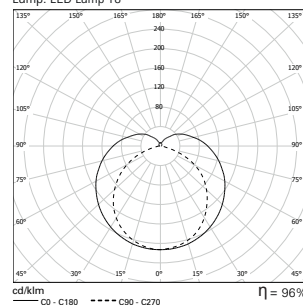


TTM LED & TTM

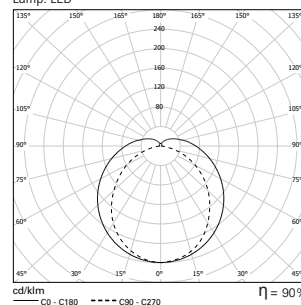


PHOTOMETRY

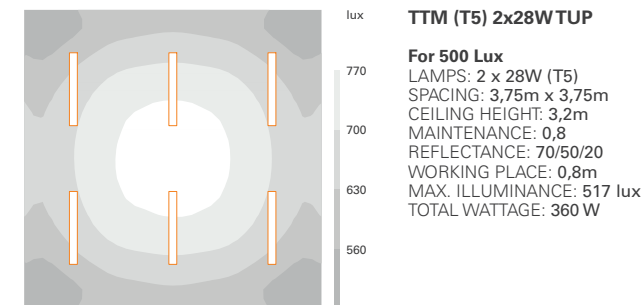
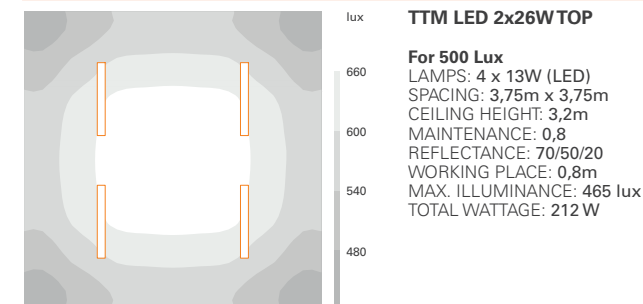
TTP LED 1x20 TUP
Lamp: LED Lamp T8



TTM LED 2x26 TOP
Lamp: LED



PERFORMANCE



TTP IP44

Optic System



TOP - Opal polycarbonate diffuser

IP End Cap



IP44 polycarbonate end caps

Fixing System and Suspension Options



Basic inox fixing holder



Acrylic fixing holder
SUSPENSION NOT POSSIBLE WITH THIS OPTION



Inox fixing holder
SUSPENSION NOT POSSIBLE WITH THIS OPTION



Suspension type "I"

TTP IP68

Optic System Options



TOP - Opal polycarbonate diffuser



TUP - Transparent polycarbonate diffuser

IP End Cap Options



IP68 polycarbonate end caps



IP68 anodized aluminium end caps

Fixing System and Suspension Options



Inox fixing holder
SUSPENSION NOT POSSIBLE WITH THIS OPTION



Suspension type "I" Inox
ONLY FOR POLYCARBONATE END CAPS



Plastic fixing holder



Suspension type "I"

Continuous Line Option



Anodized aluminium union for continuous line
ONLY AVAILABLE FOR TTP VERSIONS

TTM IP65 & IP67

Optic System Options



TOP - Opal polycarbonate diffuser



TUP - Transparent polycarbonate diffuser
ONLY AVAILABLE FOR TTM (T5)



PBB & TUP - Polish double parabolic louvre with transparent polycarbonate diffuser
ONLY AVAILABLE FOR TTM (T5)

IP End Cap Options



IP65 stainless steel end caps



IP67 anodized aluminium end caps

Fixing System and Suspension Options



Basic fixing holder



Ceiling fixing holder



Wall fixing holder



Suspension type "I"

INDELAGUE GROUP

INDELAGUE™
HIGH TECH | LIGHTING SOLUTIONS

+351 234 612 310 | indelague@indelague.pt
+351 234 624 058 | www.indelague.com
Rua da mina 465 | Covão | Zona Industrial EN1 Norte
Apartado 106. 3754-909 | ÁGUEDA | PORTUGAL

ROXO lighting

+44(0)2082412440 | roxolondon@roxolighting.com
+44(0)2082416249 | www.roxolighting.com
Unit 8 Cowley Mill Industrial Estate
Longbridge Way, Uxbridge | Middlesex UB8 2YG



The company reserves the right to change specification without prior notification or public announcement.