



LED

Norms: EN 60598-1, EN 60598-2-1



PRODUCT DESCRIPTION

Areas of Application: Industrial areas, public spaces, maintenance areas, public transport areas and parking lots.

Mounting: Surface/Suspended/Wall Mounted.

Light Distribution: Direct.

Light Source: LED 4000K, RG0, CRI>80, MacAdam Step<3, 80.000h lifetime (@L90, B10, Ta 25 C).

Optical System: Diffuser: Polycarbonate.

Control Gear: LED driver, 220-240VAC-50/60Hz.

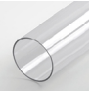
Wiring: Plastic cable gland and internal through-wiring included. 1,5 m H07RN-F cable not included.

Materials: Body: Polycarbonate tube.
End caps: Matt aluminium.


Surface Finish: White matt extruded aluminium profile.



Fixing system: Clamps (not included).

TUP - Transparent polycarbonate diffuser

LED	W	Lm Output	Lm/W	L(mm)	kg	HF	DALI
	23	3648	159	660	1,9	90493.L060.E	90493.L060.H
	34	5244	154	940	2,4	90493.L090.E	90493.L090.H
	44	6992	159	1220	2,9	90493.L120.E	90493.L120.H
	79	12232	155	1500	3,4	90514.L150.E	90514.L150.H
	99	14670	148	1500	3,6	90491.L150.E	90491.L150.H

TOP - Opal polycarbonate diffuser

LED	W	Lm Output	Lm/W	L(mm)	kg	HF	DALI
	23	3078	134	660	1,9	90492.L060.E	90492.L060.H
	34	4617	136	940	2,4	90492.L090.E	90492.L090.H
	44	6232	142	1220	2,9	90492.L120.E	90492.L120.H
	79	10981	139	1500	3,4	90513.L150.E	90513.L150.H
	99	13040	132	1500	3,6	90490.L150.E	90490.L150.H

Add suffix to order:  SRT/MID - 00000.0000.0.0058  END- 00000.0000.0.0050

The maximum amount of luminaires that can be connected in continuous line is 31. With sensor included, the maximum amount is 8.
The maximum amount of luminaires of the (1500 mm - 99W) version, that can be connected in continuous line, is 15. With sensor included, the maximum amount is 4.

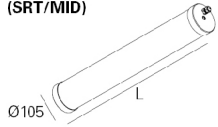
Order example: 90513.L150.E (SRT/MID) + 90513.L150.E (END) + 3000 + 978600W + 915503 + 925000 (OPTIONS)

We reserve the right to make technical changes without prior notice.
Electrical/Optical data are subjected to a tolerance of +/-10%.

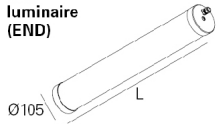
DIMENSIONS

ALUMINIUM END CAPS VERSION

Start/middle
luminaire
(SRT/MID)



End
luminaire
(END)



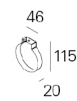
Recessed
ceiling rose
T5 D90



Surface
mounted
ceiling rose
T4 D90

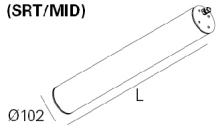


Stainless steel
clamp A1 D100

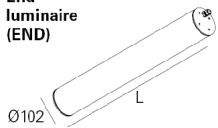


STAINLESS STEEL END CAPS VERSION

Start/middle
luminaire
(SRT/MID)



End
luminaire
(END)



Stainless steel
clamp A2 D100

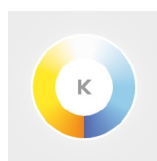


Stainless steel
clamp D100
with fast lock



OPTIONS

Colour temperature



3000K
Tunable White

• The 600 mm and 900 mm lengths in Tunable White are only applicable for end-line modules.

Order code
3000
T000

SwitchDIM Tunable White



SwitchDIM Tunable White.

• Each SwitchDIM Tunable White can control up to 20 luminaires. But, in the 1500mm version, it can control only up to 10 luminaires.

Order code
926600

Ceiling rose



Ceiling rose (IP20)
Surface mounted T24 D95
White
Black
Grey
Recessed T5 D90
White
Black
Grey

Order code
978600W
978600B
978600G
971300W
971300B
971300G

Stainless steel end caps

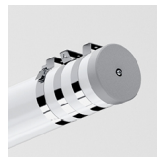


Stainless steel end caps IP68 (2x)

Order code
INOX

We reserve the right to make technical changes without prior notice. Electrical/Optical data are subjected to a tolerance of +/-10%.

Clamps



Stainless steel clamp A1 D100 (2x) **915503**
 Stainless steel clamp A2 D100 (2x) **915505**
 Stainless steel clamp D100 with fast lock (2x) **915504**

Order code

Suspension



Suspension S4 1500mm (2x)

Order code

910200

Presence sensor



Presence sensor
 Detection range: 100 %
 Hold time: 5 s
 Daylight Threshold: disable
 •For other types of programming, consult the sensor's instructions manual.
 Note: A luminaire with sensor has 170 mm more than the standard length.
 In a continuous line, only the first luminaire can include a sensor.

Order code

SENSOR

Metal cable gland



Metal cable gland
 Breathable metal cable gland

Order code

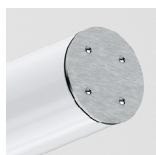
925000

926700

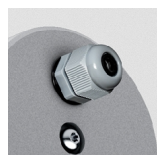
DETAILS



Matt aluminium end caps



Stainless steel end caps



Plastic cable gland



Metal cable gland



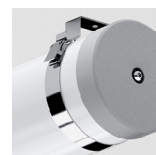
Breathable metal cable gland



Stainless steel clamp A1 D100

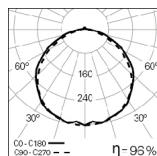


Stainless steel clamp A2 D100

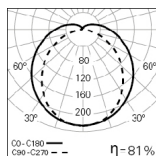


Stainless steel clamp D100 with fast lock

PHOTOMETRY



TTP 100 LINE L0660
TUP 4000K SRT/MID LO



TTP 100 LINE L0660
TOP 4000K SRT/MID LO

TO SPECIFY:

Tubular LED luminaire, IP68/IK10, for ceiling surface mounted or suspended, wall mounted and in continuous line application. Made of Ø105mm transparent or opal polycarbonate tube, with inner aluminium profile and matt aluminium end caps. Standard version with 4000K LED, RG0 (Risk Group 0 for photobiological safety, according to IEC 62471), CRI>80, MacAdam Step<3 and 80.000h lifetime (@ L90, B10, Ta 25 °C). Pre-wired with internal through-wiring and plastic cable gland. Optional in 3000K, Tunable White, with dimmable DALI driver and presence sensor. Available as option with suspension S4, stainless steel end caps, three types of fixing clamps (stainless steel A1 D100, stainless steel A2 D100 and stainless steel D70 with fast locks) and with two types of cable glands (metal cable gland or breathable metal cable gland). Possible to include recessed T5 D90 or surface mounted T24 D95 round ceiling roses. - as Indelague TTP 100 Line.

We reserve the right to make technical changes without prior notice.
 Electrical/Optical data are subjected to a tolerance of +/-10%.