



**LED**

Norms: EN 60598-1, EN 60598-2-1



IK 10 960°C 230V/50Hz

### PRODUCT DESCRIPTION

**Areas of Application:** Industrial areas, public spaces, maintenance areas, public transport areas and parking lots.

**Mounting:** Surface/Suspended/Wall Mounted.

**Light Distribution:** Direct.

**Light Source:** LED 4000K, RG0, CRI>80, MacAdam Step <3, 80.000h lifetime (@L90, B10, Ta25 C).

**Optical System:** Diffuser: Polycarbonate.

**Control Gear:** LED driver, 220-240VAC-50/60Hz.

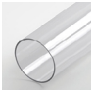
**Wiring:** 1,5 m H07RN-F cable and plastic cable gland.

**Materials:** Body: Polycarbonate tube. End caps: Injected transparent polycarbonate.

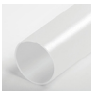
**Surface Finish:** White matt extruded aluminium profile.

**Fixing system:** Clamps(not included).


#### Low Output | TUP - Transparent polycarbonate diffuser

LED	W	Lm Output	Lm/W	L(mm)	K3	kg	HF	DALI
	13	1710	132	620	-	1,4	90477.L060.E	90477.L060.H
	18	2565	143	900	-	1,8	90477.L090.E	90477.L090.H
	23	3420	149	1180	•	2,1	90477.L120.E	90477.L120.H
	28	4370	156	1460	•	2,4	90477.L150.E	90477.L150.H

#### Low Output | TOP - Opal polycarbonate diffuser

LED	W	Lm Output	Lm/W	L(mm)	K3	kg	HF	DALI
	13	1596	123	620	-	1,4	90476.L060.E	90476.L060.H
	18	2394	133	900	-	1,8	90476.L090.E	90476.L090.H
	23	3192	139	1180	•	2,1	90476.L120.E	90476.L120.H
	28	4038	144	1460	•	2,4	90476.L150.E	90476.L150.H


#### High Output | TUP - Transparent polycarbonate diffuser

LED	W	Lm Output	Lm/W	L(mm)	K3	kg	HF	DALI
	28	3567	127	620	-	1,4	90475.L060.E	90475.L060.H
	41	5351	131	900	-	1,8	90475.L090.E	90475.L090.H
	54	7216	134	1180	•	2,1	90475.L120.E	90475.L120.H
	67	9328	139	1460	•	2,4	90475.L150.E	90475.L150.H

Order example: 90474.L150.E (HF) + 3000 + 978600W + 915404 + 925000 (OPTIONS)

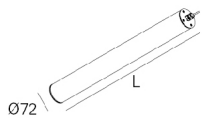
We reserve the right to make technical changes without prior notice. Electrical/Optical data are subjected to a tolerance of +/-10%.

High Output | TOP - Opal polycarbonate diffuser

LED	W	Lm Output	Lm/W	L(mm)	K3	kg	HF	DALI
	28	3280	117	620	-	1,4	90474.L060.E	90474.L060.H
	41	4920	120	900	-	1,8	90474.L090.E	90474.L090.H
	54	6642	123	1180	•	2,1	90474.L120.E	90474.L120.H
	67	8508	127	1460	•	2,4	90474.L150.E	90474.L150.H

### DIMENSIONS

INJECTED  
TRANSPARENT  
POLYCARBONATE  
END CAPS VERSION



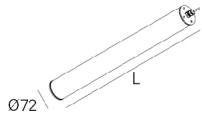
Recessed  
ceiling rose  
T5 D90



Surface  
mounted  
ceiling rose  
T4 D90



STAINLESS STEEL  
END CAPS VERSION



Stainless steel  
clamp A1 D70



Stainless steel  
clamp A2 D70

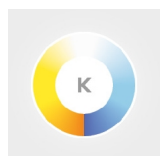


Stainless steel  
clamp D70  
with fast lock



### OPTIONS

Colour temperature



3000K  
Tunable White

Order code  
**3000**  
**T000**

SwitchDIM Tunable White



SwitchDIM Tunable White.

• The SwitchDIM Tunable White allows the control of 20 luminaires at most.

Order code  
**926600**

We reserve the right to make technical changes without prior notice. Electrical/Optical data are subjected to a tolerance of +/-10%.

### Ceiling rose



Ceiling rose (IP20)  
Surface mounted T24 D95  
White  
Black  
Grey  
Recessed T5 D90  
White  
Black  
Grey

Order code

**978600W**  
**978600B**  
**978600G**  
**971300W**  
**971300B**  
**971300G**

### Stainless steel end caps



Stainless steel end caps IP68 (2x)

• The product is class I.

Order code

**INOX**

### Clamps



Stainless steel clamp A1 D70 (2x)  
Stainless steel clamp A2 D70 (2x)  
Stainless steel clamp D70 with fast lock (2x)

Order code

**915403**  
**915405**  
**915404**

### Suspension



Suspension S4 1500mm (2x)

Order code

**910200**

### Emergency unit



Emergency unit 3 hours

•Only available in ON/OFF (HF) version and with self-test.

Order code

**K3**

### Presence sensor



Presence sensor  
Detection range:100 %  
Hold time:5 s  
Daylight Threshold: disable

•For other types of programming, consult the sensor's instructions manual.

Note:A luminaire with sensor has 130 mm more than the standard length.

Order code

**SENSOR**

### Metal cable gland

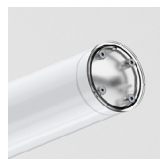


Metal cable gland  
Breathable metal cable gland

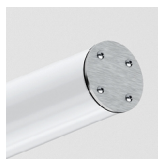
Order code

**925000**  
**926700**

### DETAILS



Injected transparent polycarbonate end caps



Stainless steel end caps



Plastic cable gland



Metal cable gland



Breathable metal cable gland



Stainless steel clamp A1 D70



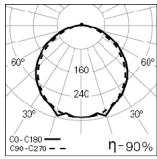
Stainless steel clamp A2 D70



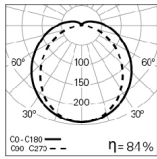
Stainless steel clamp D70 with fast lock

We reserve the right to make technical changes without prior notice. Electrical/Optical data are subjected to a tolerance of +/-10%.

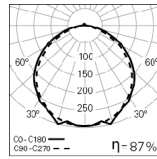
### PHOTOMETRY



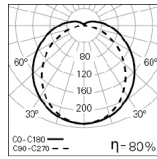
**TTP 70 L0620**  
**TUP 4000K LO**



**TTP 70 L0620**  
**TOP 4000K LO**



**TTP 70 L0620**  
**TUP 4000K HO**



**TTP 70 L0620**  
**TOP 4000K HO**

#### TO SPECIFY:

Tubular LED luminaire, IP68/IK10, for ceiling surface mounted or suspended, and wall mounted application. Made of Ø72mm transparent or opal polycarbonate tube, with inner aluminium profile and injected transparent polycarbonate end caps. Standard version with 4000K LED, RG0 (Risk Group 0 for photobiological safety, according to IEC 62471), CRI>80, MacAdam Step<3 and 80.000h lifetime (@ L90, B10, Ta 25 °C). Pre-wired with 1,50m H07RN-F cable and plastic cable gland. Optional in 3000K, Tunable White, dimmable DALI driver, presence sensor and 3 hours emergency unit with self-test. Available as option with suspension S4, stainless steel end caps, three types of fixing clamps (stainless steel A1 D70, stainless steel A2 D70 and stainless steel D70 with fast locks) and with two types of cable glands (metal cable gland or breathable metal cable gland). Possible to include recessed T5 D90 or surface mounted T24 D95 round ceiling roses. - as Roxo Lighting TTP 70.

We reserve the right to make technical changes without prior notice.  
Electrical/Optical data are subjected to a tolerance of +/-10%.