

TTP 70 Colour

Downlights



Norms: EN 60598-1, EN 60598-2-1



PRODUCT DESCRIPTION

Areas of Application: Commercial and Business areas, Public buildings, Housing, Offices, Hotel and Restaurant services, Art and Culture spaces.

Mounting: Surface/Suspended/Wall Mounted.

Light Distribution: Direct.

Light Source: T5 (G5) lamp included.

Control Gear: Electronic equipment, 220-240VAC-50/60Hz.

Wiring: Pre-wired 1,5m transparent cable with plastic cable gland.

Materials: Body: Polycarbonate tube.
End caps: Injected transparent polycarbonate.

Surface Finish: Powder coated.

TUP - Transparent polycarbonate diffuser.

	LAMP*	Socket	W	Lm/W	η(%)	AxB (mm)	K1	Kg	HF	DSI	DALI
	T5	G5	1x14	66	92	Ø72x640	-	1	9L4M.114.1H.A4	9L4M.114.1H.84	9L4M.114.1H.74
		G5	1x24	64	91	Ø72x640	-	1	9L4M.124.1H.A4	9L4M.124.1H.84	9L4M.124.1H.74
	G5	1x28	78	92	Ø72x1240	•	1,5	9L4M.128.1H.A4	9L4M.128.1H.84	9L4M.128.1H.74	
	G5	1x35	81	93	Ø72x1540	•	1,9	9L4M.135.1H.A4	9L4M.135.1H.84	9L4M.135.1H.74	
	G5	1x49	77	93	Ø72x1540	•	1,9	9L4M.149.1H.A4	9L4M.149.1H.84	9L4M.149.1H.74	
	G5	1x54	70	90	Ø72x1240	•	1,5	9L4M.154.1H.A4	9L4M.154.1H.84	9L4M.154.1H.74	
	G5	1x80	68	94	Ø72x1540	-	1,9	9L4M.180.1H.A4	9L4M.180.1H.84	9L4M.180.1H.74	

TOP - Opal polycarbonate diffuser.

	LAMP*	Socket	W	Lm/W	η(%)	AxB (mm)	K1	Kg	HF	DSI	DALI
	T5	G5	1x14	62	86	Ø72x640	-	1	9L4M.114.1G.A4	9L4M.114.1G.84	9L4M.114.1G.74
		G5	1x24	59	84	Ø72x640	-	1	9L4M.124.1G.A4	9L4M.124.1G.84	9L4M.124.1G.74
	G5	1x28	74	87	Ø72x1240	•	1,5	9L4M.128.1G.A4	9L4M.128.1G.84	9L4M.128.1G.74	
	G5	1x35	76	87	Ø72x1540	•	1,9	9L4M.135.1G.A4	9L4M.135.1G.84	9L4M.135.1G.74	
	G5	1x49	72	87	Ø72x1540	•	1,9	9L4M.149.1G.A4	9L4M.149.1G.84	9L4M.149.1G.74	
	G5	1x54	66	84	Ø72x1240	•	1,5	9L4M.154.1G.A4	9L4M.154.1G.84	9L4M.154.1G.74	
	G5	1x80	63	88	Ø72x1540	-	1,9	9L4M.180.1G.A4	9L4M.180.1G.84	9L4M.180.1G.74	

Please note: 1x80W only to be used in low temperature applications. Ambient temperature must be under 15 C.

END CAP COLOURS

Code	Description
B	Black
T	Yellow
X	Purple

* Lamp included

Example code for order: 9L4M.114.1H.74 (DALI) + B (END CAP COLOURS) + 915200 + 910200 (OPTIONS)

We reserve the right to make technical changes without prior notice. Electrical/Optical data are subjected to a tolerance of +/-10%.

END CAP COLOURS

Code	Description
V	Green
K	Red
U	Blue
Y	Orange

OPTIONS

Code	Description
915200	Basic stainless steel fixing holder (x2).
915202	Acrylic fixing holder (x2).
910200	Suspension type "I" (x2) (only for basic stainless steel fixing holder).
K1	Emergency unit 1 hour.
--	IP 44 version.

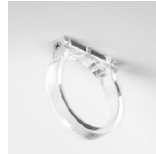
DETAILS



Metal cable gland standard for DS/DALI versions

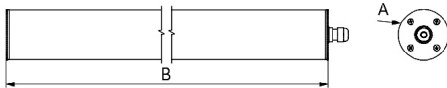


Basic stainless steel fixing holder



Acrylic fixing holder

DIMENSIONS



TO SPECIFY:

Architectural T5(G5) luminaire in polycarbonate tube. Available for 14/24/28/35/49/54/80W fluorescent lamps. Luminaire with 72mm diameter to be surface, suspended or wall mounted. Optional colour end caps, IP44 version, dimmable versions and 1 hour emergency available - as Roxo Lighting TTP 70 Colour.