



LED

Norms: EN 60598-1, EN 60598-2-1



PRODUCT DESCRIPTION

Areas of Application: Storehouses, Industrial areas, Corridors, Garages, Basements.

Mounting: Surface/Suspended/Wall Mounted.

Light Distribution: Direct.

Light Source: LED 4000K, CRI>80, 65.000h life (@L80, B10, Ta 25 C).

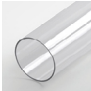
Control Gear: LED driver, 220-240VAC-50/60Hz.

Wiring: Pre-wired 1,5m long H07RN-F cable with plastic cable gland.

Materials: Body: Polycarbonate tube.
End caps: Injected transparent polycarbonate.

Surface Finish: White matt powder coated gear tray.

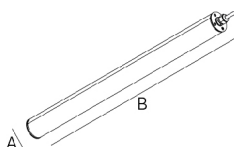
TUP - Transparent polycarbonate diffuser.

LED	W	Lm	Lm/W	η(%)	AxB (mm)	K1	kg	HF	DALI
	15	1610	105	100	Ø52x620	-	0,9	907E.015.1H.F4	907E.015.1H.E4
	26	3220	124	100	Ø52x1180	•	1,3	907E.026.1H.F4	907E.026.1H.E4
	31	4025	131	100	Ø52x1460	•	1,5	907E.031.1H.F4	907E.031.1H.E4

TOP - Opal polycarbonate diffuser.

LED	W	Lm	Lm/W	η(%)	AxB (mm)	K1	kg	HF	DALI
	15	1610	96	89	Ø52x620	-	0,9	907E.015.1G.F4	907E.015.1G.E4
	26	3220	113	91	Ø52x1180	•	1,3	907E.026.1G.F4	907E.026.1G.E4
	31	4025	118	91	Ø52x1460	•	1,5	907E.031.1G.F4	907E.031.1G.E4

DIMENSIONS



Exemple code for order: 907E.031.1G.F4 (HF) + 3000 + 915003 + 910200 + K1 (OPTIONS).

We reserve the right to make technical changes without prior notice.
Electrical/Optical data are subjected to a tolerance of +/-10%.

OPTIONS

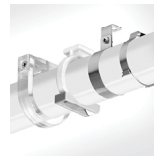
Colour temperature



3000K

Order code
3000

Fixing holders



Standard stainless steel (x2)
Stainless steel (x2)
Plastic (x2)
Acrylic (x2)

Order code
915003
915000
915001
915002

Suspension type "I"



Suspension type "I" (x2)

• Only for standard stainless steel fixing holder.

Order code
910200

Emergency unit



Emergency unit 1 hour

• Only available for HF version

Order code
K1

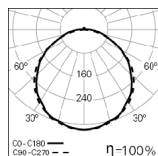
Metal cable gland.



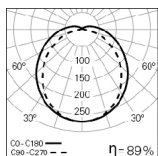
Metal cable gland.

Order code
925000

PHOTOMETRY



**TTP LED 15W
TUP 4000K**



**TTP LED 15W
TOP 4000K**

TO SPECIFY:

Tubular LED luminaire, IP68/IK10, for ceiling surface mounting, ceiling suspension, or wall application. Made in opal or transparent polycarbonate tube, 52mm diameter. In standard with 4000K LED, CRI>80 and 65.000h lifetime (@L80, B10, Ta 25 C), and equipped with HF(on/off) driver. Pre-wired with 1,50mt long H07RN-F cable and with plastic cable gland. Optional dimmable DALI driver, 3000K, fixing system, suspensions, metal cable gland and 1 hour emergency unit.- as Indelague TTP LED.

We reserve the right to make technical changes without prior notice.
Electrical/Optical data are subjected to a tolerance of +/-10%.