

Norms: EN 60598-1, EN 60598-2-1



PRODUCT DESCRIPTION

Areas of Application: Police stations, detention centres, public spaces, psychiatric hospitals, schools.

Mounting: Ceiling surface.

Light Distribution: Direct.

Light Source: T5 (G5) lamp.

Optical System: Diffuser: 3mm polycarbonate.

Control Gear: Electronic equipment, 220-240VAC-50/60Hz.

Materials: Body: Steel sheet.

Surface Finish: Powder coated in white matt (RAL9016).



DOZ - Opal polycarbonate diffuser

LAMP	W	Lm	Lm/W	η(%)	AxBxC (mm)	Kg	HF	DALI
T5	2x28	5200	59	68	1350x290x66	15	966K.228.2J.A4	966K.228.2J.74
	2x35	6600	61	71	1650x290x66	18	966K.235.2J.A4	966K.235.2J.74
	2x49	8600	53	65	1650x590x66	18	966K.249.2J.A4	966K.249.2J.74
	2x54	8900	52	67	1350x290x66	15	966K.254.2J.A4	966K.254.2J.74

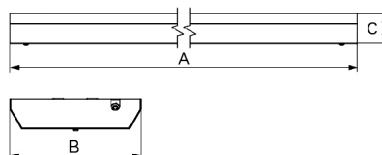
DPT - Transparent polycarbonate diffuser

LAMP	W	Lm	Lm/W	η(%)	AxBxC (mm)	Kg	HF	DALI
T5	2x28	5200	66	76	1350x290x66	15	966K.228.7Z.A4	966K.228.7Z.74
	2x35	6600	72	83	1650x290x66	18	966K.235.7Z.A4	966K.235.7Z.74
	2x49	8600	64	79	1650x590x66	18	966K.249.7Z.A4	966K.249.7Z.74
	2x54	8900	61	78	1350x290x66	15	966K.254.7Z.A4	966K.254.7Z.74

OPTIONS

Code	Description
K3	Emergency unit 3 hours.
K1	Emergency unit 1 hour.
--	Lamps as optional.
--	Motion sensor.

DIMENSIONS



TO SPECIFY:

Surface mounted IP65 sealed luminaire for fluorescent T5(G5) 28/35/49/54W. Steel sheet frame with tamperproof screws and transparent or opal polycarbonate diffuser designed to resist extreme physical impact (IK10). Optional 1 or 3 hours emergency – as Roxo Lighting ZLP.

* Lamp not included
Example code for order: 966K.228.2J.74 (DALI)

We reserve the right to make technical changes without prior notice. Electrical/Optical data are subjected to a tolerance of +/-10%.